

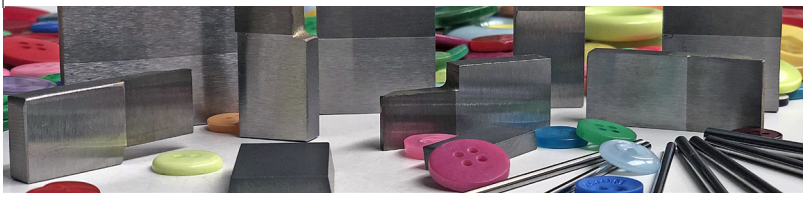
# TECHNOLOGY FOR BUTTONS



# UTENTOR

TECHNOLOGY FOR TOOLING





**TECHNOLOGY FOR BUTTONS**



## **Una questione di precisione** ***A question of precision***

LA UTENTOR S.R.L. DAL 1977 È PRESENTE COME AZIENDA LEADER NEL SETTORE COSTRUZIONE E RIAFFILATURA UTENSILI.

PROGETTIAMO O REALIZZIAMO A DISEGNO DEL CLIENTE QUALSIASI TIPO DI UTENSILE, SU SVARIATI TIPI DI MATERIALI E CON DIFFERENTI GEOMETRIE DI TAGLIO IN FUNZIONE DEL TIPO DI MATERIALE DA LAVORARE.

IL NOSTRO UFFICIO TECNICO È IN GRADO DI ELABORARE SOLUZIONI IDONEE A OGNI TIPO DI LAVORAZIONE.

IL PERSONALE ALTAMENTE QUALIFICATO CON MACCHINARI ALL'AVANGUARDIA PERMETTE ALLA UTENTOR DI OTTENERE UN PRODOTTO EFFICIENTE E DI QUALITÀ. PER QUESTO GLI UTENSILI UTENTOR VENGONO UTILIZZATI QUOTIDIANAMENTE NELLE AZIENDE LEADER IN ITALIA E ALL'ESTERO.

PUNTO FORTE DELLA UTENTOR È L'UTILIZZO DEI PROPRI UTENSILI PER LA LAVORAZIONE CONTOTERZI DI SVARIATI PRODOTTI, DOVE L'AZIENDA TRAE IL VANTAGGIO DI DETERMINARE LA QUALITÀ DEI PROPRI MATERIALI E GEOMETRIE DI TAGLIO, POTENDO COSÌ INDIVIDUARE PARAMETRI IDEALI DA CONSIGLIARE AL CLIENTE.

DOPO UNO SCRUPOLOSO CONTROLLO VIENE IMPRESSO IL MARCHIO DURALOY SINONIMO DI QUALITÀ E GARANZIA.

*UTENTOR S.R.L. HAS BEEN A LEADING COMPANY IN THE MANUFACTURE AND REGRINDING OF TOOLS SINCE 1977.*

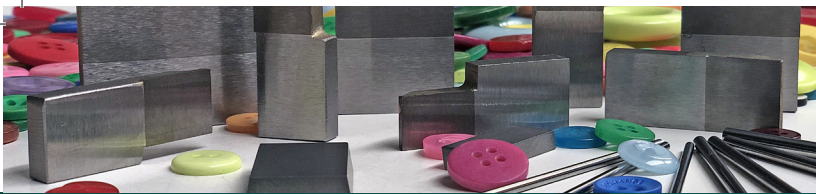
*WE CAN PRODUCE ANY TYPE OF TOOL EITHER ACCORDING TO OUR OWN DESIGNS OR THOSE PROVIDED BY CLIENTS, USING A WIDE RANGE OF MATERIALS AND WITH DIFFERENT CUTTING PATTERNS IN ACCORDANCE WITH THE TYPE OF MATERIAL USED.*

*OUR TECHNICAL DEPARTMENT IS CAPABLE OF PRODUCING SOLUTIONS SUITED TO ALL TYPES OF PROCESS.*

*THE HIGHLY QUALIFIED PERSONNEL AND CUTTING-EDGE MACHINERY ALLOW UTENTOR TO PRODUCE AN EFFICIENT, HIGH-QUALITY PRODUCT. THIS IS WHY UTENTOR TOOLS ARE USED DAILY BY LEADING COMPANIES IN ITALY AND ABROAD.*

*ONE OF THE STRENGTHS OF UTENTOR IS THE USE OF ITS OWN TOOLS FOR THE CONTRACT PRODUCTION OF A WIDE RANGE OF PRODUCTS, A SITUATION THAT PROVIDES THE COMPANY WITH THE ADVANTAGE OF BEING ABLE TO DETERMINE THE QUALITY OF ITS OWN MATERIALS AND CUTTING PATTERNS, THUS IDENTIFYING THE IDEAL PARAMETERS TO RECOMMEND TO ITS CLIENTS.*

*FOLLOWING SCRUPULOUS CHECKS, THE DURALOY BRAND IS APPLIED, A SYMBOL OF QUALITY AND A GUARANTEE.*



**PRODUZIONE DI UTENSILI  
IN METALLO DURO  
SALDOBRSATO,  
UTENSILI  
A PROFILO COSTANTE,  
AGHI IN METALLO DURO**

*PRODUCTION OF TOOLS IN  
BRAZED SOLID CARBIDE,  
CONSTANT-PROFILE TOOLS,  
HARD METAL NEEDLES*

**MARCATURE LASER  
DI DISEGNI  
E LOGHI SUI VOSTRI  
PRODOTTI**

*LASER SCORING OF  
DRAWINGS AND LOGOS  
ON YOUR PRODUCTS*



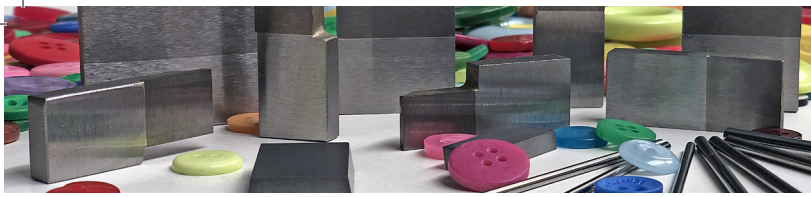


**TECHNOLOGY FOR BUTTONS**



**PRODUZIONE DI UTENSILERIA  
SPECIALE A DISEGNO**

*PRODUCTION OF SPECIAL TOOLS ON DESIGN*



I nostri utensili in metallo duro saldobrasato vengono forniti con corpo in acciaio, placchetta in metallo duro di qualità italiana e con piano d'appoggio rettificato. Vengono confezionati a cinque pezzi sottovuoto con nostro logo o marcatura personalizzata del cliente.

Si eseguono, a richiesta, utensili diversi da quelli standard a magazzino a disegno del cliente.

*Our tools in brazed solid carbide are produced with a steel body, an Italian-quality solid carbide plate and ground surface.*

*They are supplied in vacuum-sealed packs of five with our logo or the client's personalised branding.*

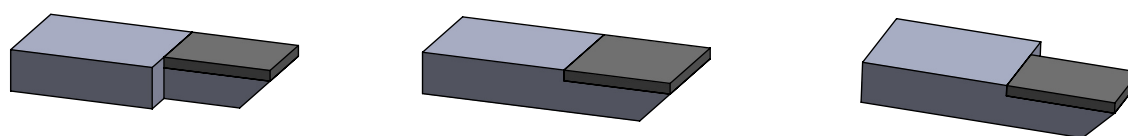
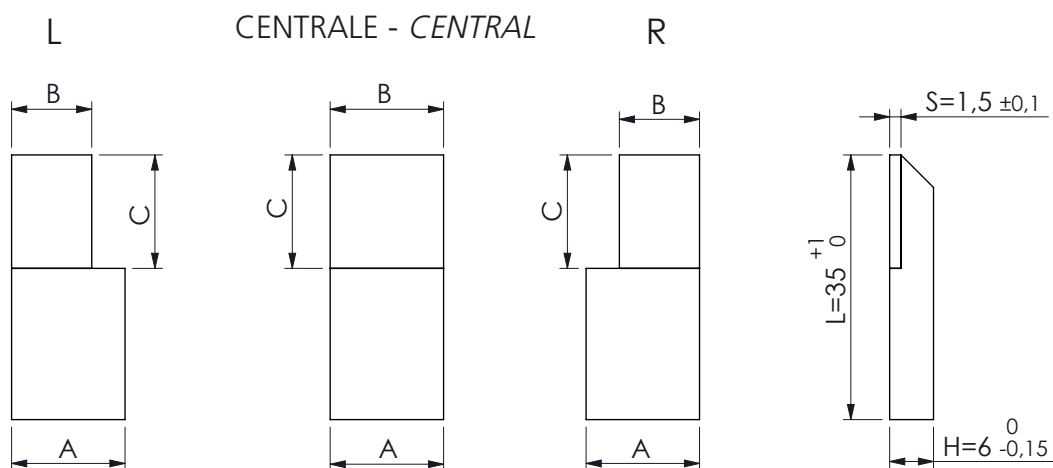
*On request, non-standard tools other than those in stock can be produced in accordance with client designs.*





# UTENSILI MDS - MDS TOOLS

## CARATTERISTICHE TECNICHE - TECHNICAL CHARACTERISTICS



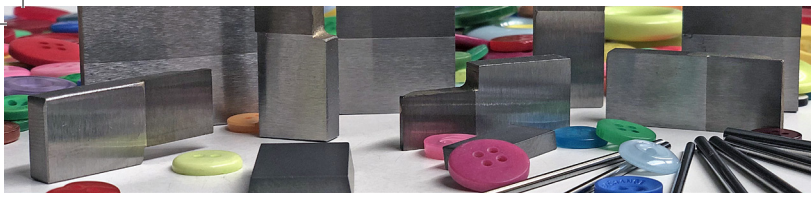
### Utensile MDS con piano d'appoggio rettificato A richiesta utensili MDS speciali

*MDS tool with ground surface  
Special MDS tools on request*

CODICE/CODE	A	H	L	B	C	S
UB2100715R	15	6	35	7	15	1,5
UB2100715L	15	6	35	7	15	1,5
UB2101015R	15	6	35	10	15	1,5
UB2101015L	15	6	35	10	15	1,5
UB2101215R	15	6	35	12	15	1,5
UB2101215L	15	6	35	12	15	1,5

CODICE/CODE	A	H	L	B	C	S
UB2101520	15	6	35	15	20	1,5
UB2102020	20	6	35	20	20	1,5
UB2102520	25	6	35	25	20	1,5
UB2103020	30	6	35	30	20	1,5
UB2103520	35	6	35	35	20	1,5
UB2104020	40	6	35	40	20	1,5

CODICE/CODE	A	H	L	B	C	S
UB2101515	15	6	35	15	15	1,5
UB2101715	17	6	35	17	15	1,5
UB2101815	18	6	35	18	15	1,5
UB2102015	20	6	35	20	15	1,5
UB2102515	25	6	35	25	15	1,5
UB2103015	30	6	35	30	15	1,5
UB2103515	35	6	35	35	15	1,5
UB2104015	40	6	35	40	15	1,5

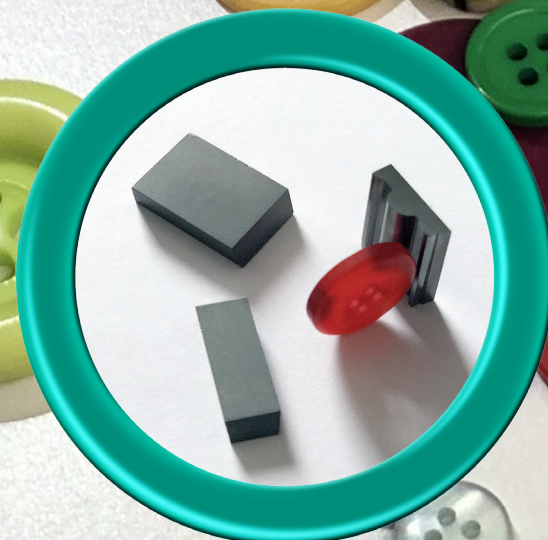
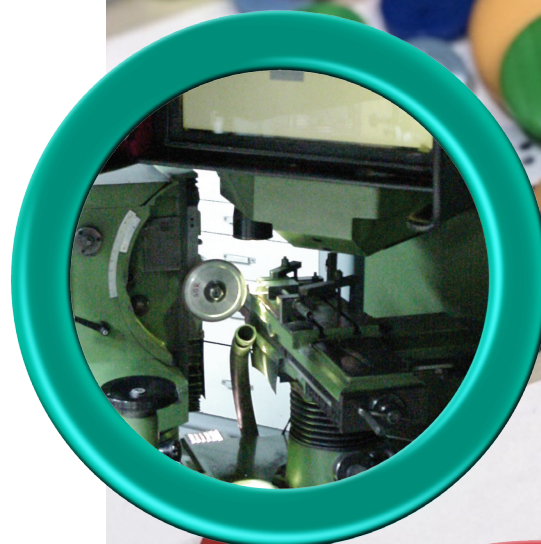


Le placchette in metallo duro sinterizzate a profilo costante, vengono fornite grezze non lavorate in qualità K12/20 oppure profilate con nostre profilatrici ottiche, o con filo elettroerosione.

Si possono avere, a richiesta, misure diverse da quelle standard a magazzino indicate in tabella.

*Sintered solid carbide constant-profile plates are supplied unfinished in K12/20 quality, profiled with our optical profilers or with wire electro-erosion.*

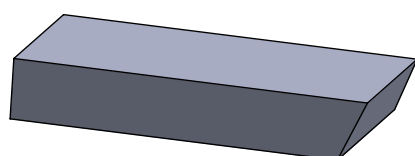
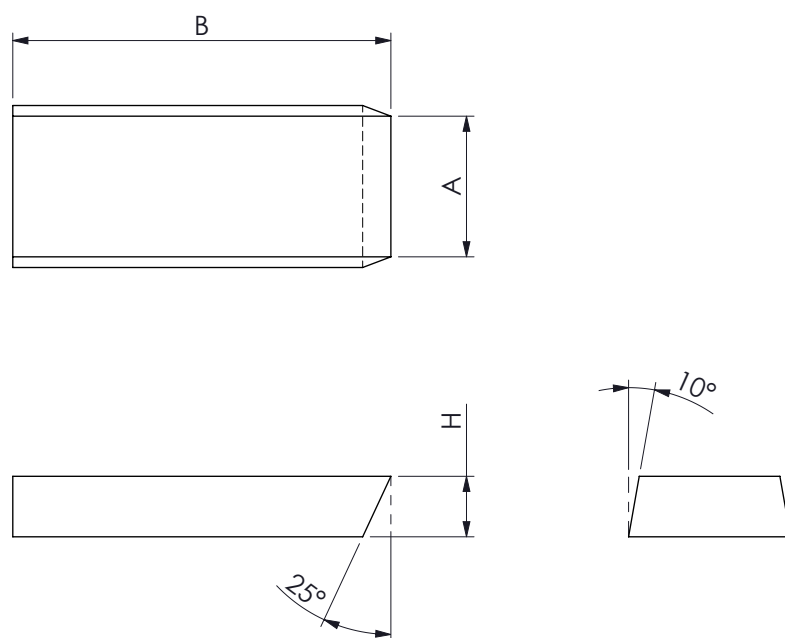
*Non-standard sizes are available on request, different from those shown in the table and available from stock.*





## PLACCHETTE MD - MD PLATES

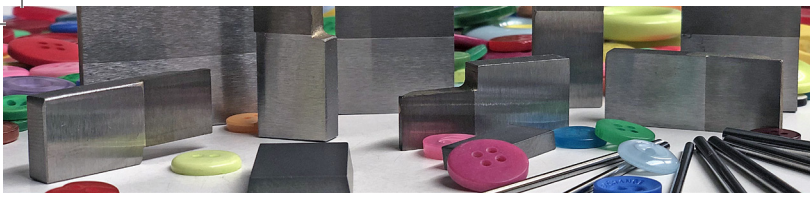
### CARATTERISTICHE TECNICHE - TECHNICAL CHARACTERISTICS



**A richiesta misure speciali**

*Special sizes available on request*

CODICE/CODE	A	H	B
PMS934025	9.3	4	25
PMS934525	9.3	4.5	25
PMS935025	9.3	5	25
PMS936025	9.3	6	25
PMS937025	9.3	7	25
PMS1136025	11.3	6	25
PMS1334525	13.3	4.5	25
PMS1335025	13.3	5	25
PMS1336025	13.3	6	25
PMS1337025	13.3	7	25
PMS1338025	13.3	8	25
PMS1357025	13.5	7	25
PMS175025	17	5	25
PMS177025	17	7	25
PMS171425	17	14	25
PMS171525	17	15	25
PMS1735025	17.3	5	25
PMS1736025	17.3	6	25
PMS1737025	17.3	7	25
PMS1738025	17.3	8	25
PMS1757025	17.5	7	25
PMS1779025	17.7	9	25
PMS228025	22	8	25
PMS2236025	22.3	6	25
PMS2238025	22.3	8	25
PMS2231025	22.3	10	25
PMS2257025	22.5	7	25
PMS2351025	23.5	10	25
PMS248025	24	8	25
PMS308025	30	8	25



Produciamo portautensili per placchette a profilo costante standard oppure a disegno del cliente.

Utentor è in grado di produrre ogni genere di utensile speciale a disegno: portautensili, portainserti, utensili a fissaggio meccanico, ecc.

*We produce tool holders for constant-profile plates, whether standard or according to client designs.*

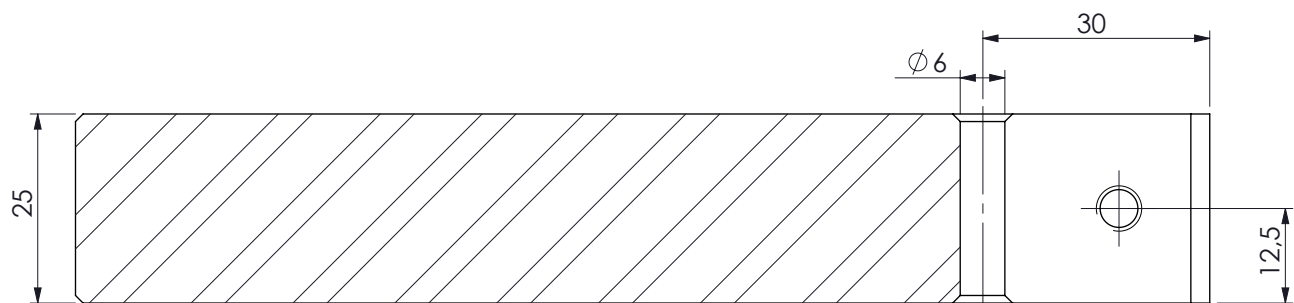
*Utentor can produce all types of special tool according to design: tool holders, insert holders, mechanical fixing tools, etc.*



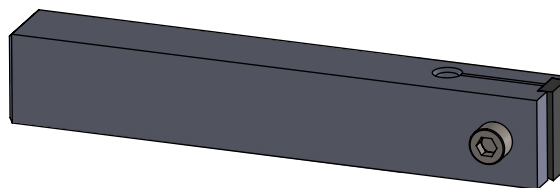
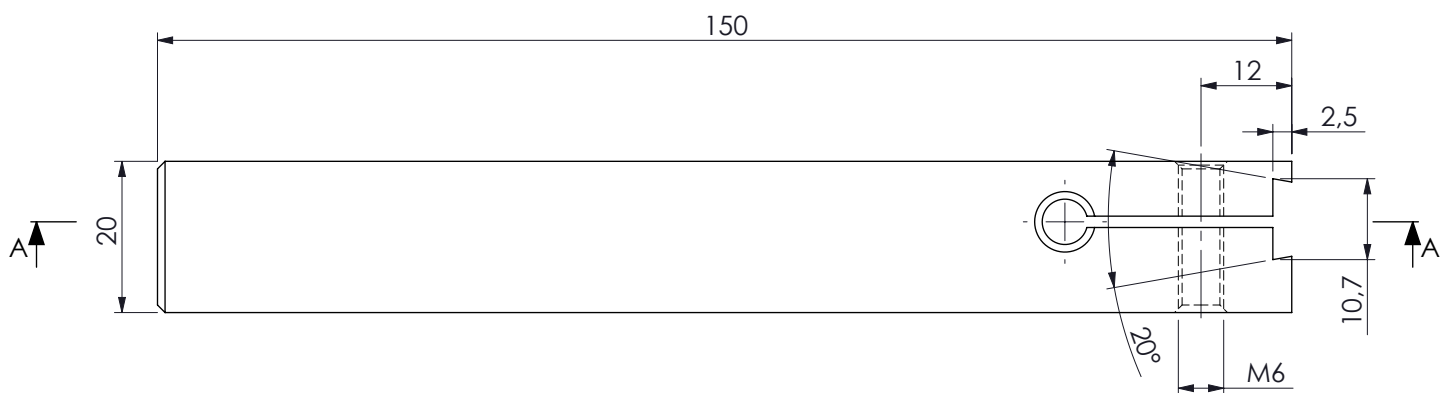


## PORTAUTENSILE - TOOL HOLDERS

### CARATTERISTICHE TECNICHE - TECHNICAL CHARACTERISTICS

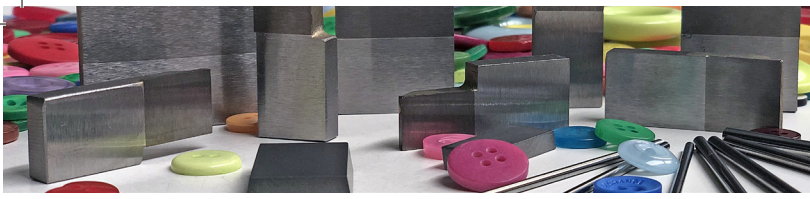


SEZIONE A-A      SCALA 1:1  
SECTION A-A      SCALE 1:1



**Il portautensile può essere realizzato con qualsiasi misura, materiale e geometria, specificate a disegno in fase di realizzazione.**

*Tool holders can be made to any size and shape and with any material, according to designs provided during manufacturing.*



I nostri cilindretti vengono forniti in MDI K12 micrograna rettificati H6 e nella lunghezza di 90 mm.

Abbiamo disponibili, a richiesta, diametri superiori e lunghezze diverse rispetto a quelle standard a magazzino indicate in tabella.

A richiesta anche cilindretti in HSS.

*Our cylinders are supplied in ground MDI K12 micrograin, diameter H6, 90 mm in length.*

*On request, we can supply wider diameters and lengths other than the standard ones shown in the table and available from stock.*

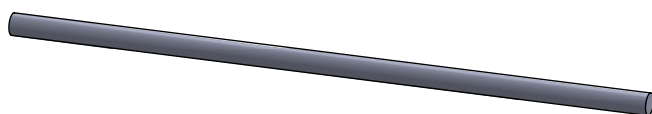
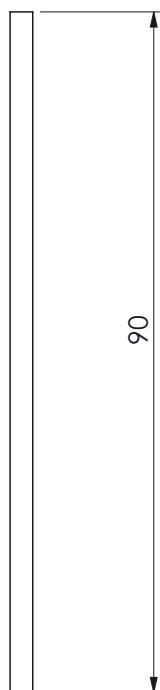
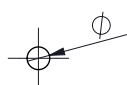
*Cylinders in HSS are also available on request.*



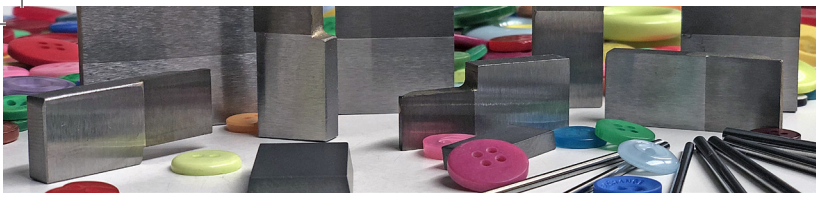


## CILINDRETTI MDI - MDI CYLINDERS

### CARATTERISTICHE TECNICHE - TECHNICAL CHARACTERISTICS



CODICE/CODE	Ø
CIL022000001	1
CIL022000002	1.1
CIL022000003	1.2
CIL022000004	1.3
CIL022000005	1.4
CIL022000006	1.5
CIL022000007	1.6
CIL022000008	1.7
CIL022000009	1.8
CIL022000010	1.9
CIL022000011	2
CIL022000012	2.1
CIL022000013	2.2
CIL022000014	2.3
CIL022000015	2.4
CIL022000016	2.5
CIL022000017	2.6
CIL022000018	2.7
CIL022000019	2.8
CIL022000020	2.9
CIL022000021	3
CIL022000022	3.1
CIL022000023	3.2
CIL022000024	3.3
CIL022000025	3.4
CIL022000026	3.5
CIL022000027	3.6
CIL022000028	3.7
CIL022000029	3.8
CIL022000030	3.9
CIL022000031	4
CIL022000032	4.5
CIL022000033	5
CIL022000034	6



Produciamo porta aghi in acciaio per qualsiasi misura di aghi, disponibili in varie lunghezze.

A richiesta è possibile affilare l'ago direttamente a lancia con relative spoglie.

*We produce steel needle holders for all sizes of needle and available in a range of lengths.*

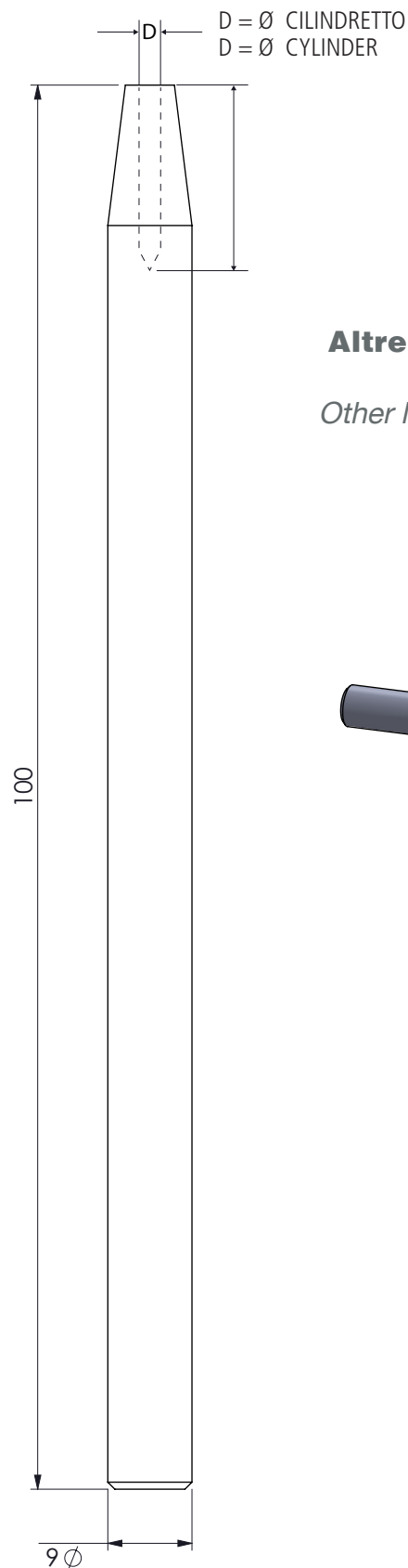
*On request, the needle can be ground directly with a spear head and relative draft.*





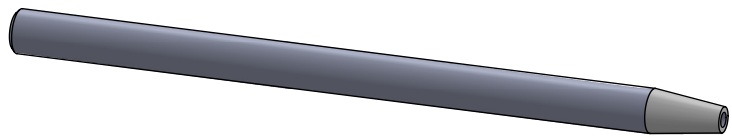
## PORTA AGHI - NEEDLE HOLDERS

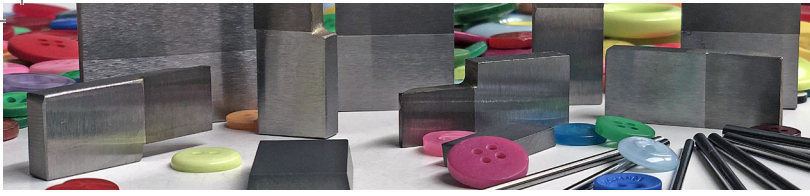
### CARATTERISTICHE TECNICHE - TECHNICAL CHARACTERISTICS



**Altre lunghezze a richiesta**

*Other lengths available on request*





Realizziamo frese standard o speciali a disegno in metallo duro integrale, metallo duro saldobrasato e HSS sia per il settore bottonifici che per qualsiasi altro settore.

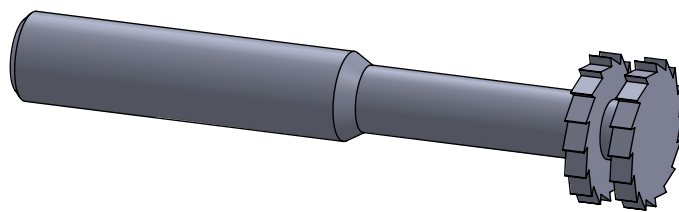
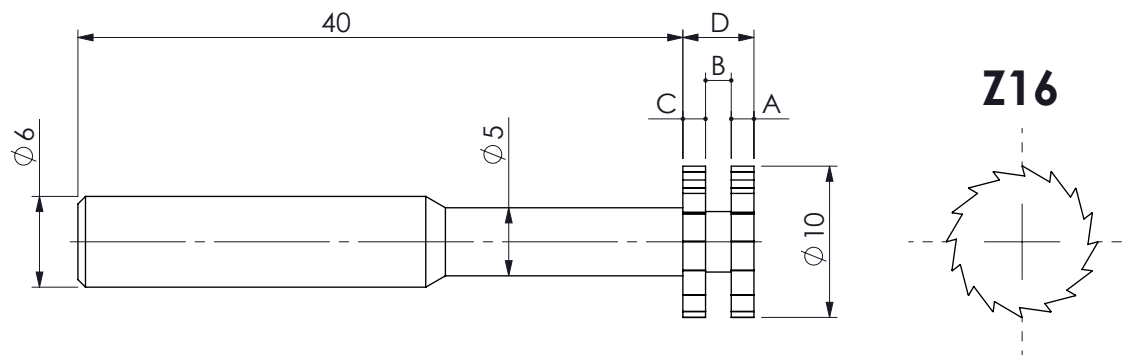
*We produce standard cutters as well as special models according to design in solid carbide, brazed solid carbide and HSS, both for button manufacture and all other sectors.*



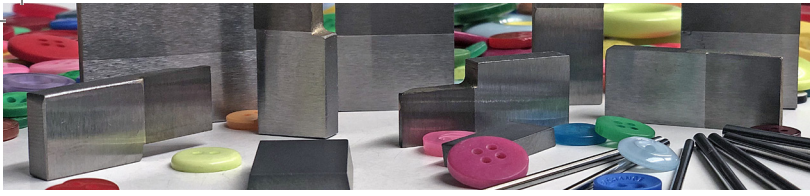


## FRESE MDI - MDI CUTTERS

### CARATTERISTICHE TECNICHE - TECHNICAL CHARACTERISTICS



CODICE/CODE	A	B	C	D
FMD01	1.1	1.8	1.1	4
FMD02	1.2	2.4	1.2	4.8
FMD03	1.4	1.2	1.4	4
FMD04	1.5	1.7	1.5	4.7
FMD05	1.6	1.4	1.6	4.6
FMD06	1.8	1.5	1.8	5.1
FMD07	1.8	2.2	1.8	5.8
FMD08	2	2.8	2	6.8
FMD09	2.1	1.3	2.1	5.5
FMD10	2.1	1.9	2.1	5.1
FMD11	2.2	3	2.2	7.4
FMD12	2.5	2.5	2.5	7.5
FMD13	3	3.3	3	9.3
FMD14	1.7	1.6	1.7	5



TECHNOLOGY FOR BUTTONS







**commerciale@utentor.it**  
**www.utentor.it**



TECHNOLOGY FOR TOOLING

**UTENTOR s.r.l.**

Via C. Colombo, 38/E  
24046 Osio Sotto (Bergamo) - Italy - UE  
Tel. 0039 035 807737 r.a.  
Fax 0039 035 806528

**UNITÀ SECONDARIA**

Via A. Vespucci, 14  
24046 Osio Sotto (Bergamo) - Italy - UE  
Tel. 0039 035 4876004  
Cell. 335 6162673